

Eau Claire Area Master Gardener News



July 2018

Another Successful Plant Sale...

(Photos by Paula Bonnin)



Should I or shouldn't I?



A great place to shop...



Another year, another plant sale done!

The annual ECAMGA Plant Sale held at Phoenix Park was held on Sunday, June 10, 2018. It was a nice day, a little windy but no rain or storms. The sale took in a gross of \$1,813.50. When all expenses are paid the planning committee will let members know the profit.

We would like to thank all who donated plants for the sale especially Dick Lienhardt. and Nina Logan. Thank you also to all the non-MGs who helped with the sale especially Tom Kempen, Terry Griffin, John Davis, and Mary Jane's daughter, Kris Choate. Thank you to all who patronized the sale. A **BIG** Thank You to the Plant Sale committee for all their hard work in preparing for the sale.

Next year, our annual Plant Sale will be Sunday, June 9, 2019 at Phoenix Park. If you are dividing houseplants soon, please save one division for the plant sale. We do need more volunteers to help the customers. Please consider being a volunteer next year.

Have a Great Summer!
Mary Jane Griffin and Susan Merten,
Plant Sale Co-Chairs



Peonies are perennials that may live longer than people do – some have been known to thrive for 100 years.



If it smells like poo everywhere you go, check the bottom of your own shoes first!



Local Master Gardener News

Changing e-mail? Moving?

If you do, please remember to notify the ECAMGA and the newsletter editor of your new e-mail address and/or mailing address so you don't miss any Eau Claire Area Master Gardener happenings!

Email your new information to Carol Cox at c7w6c2200@charter.net or notify her by snail mail at 1908 Hogeboom Ave., Eau Claire, WI 54701 (or call her at 715-783-0016 - cell).



Bulletin Board Postings Stories and Opportunities!!!

MGV

ECAMGA Board

ECAMGA BOARD MEMBER CONTACT INFO

Name	E-mail address	Phone number
Mary Jane Griffin	mgriffinhlaa@gmail.com	715-835-6979
Dick Lienhardt	dicklienhardt@yahoo.com	715-286-9917
Paula Bonnin	paula.d.bonnin@gmail.com	715-220-6373
Ede Strand	edestrand@aol.com	715-8326775
Jerry Richards	richardsleeann@hotmail.com	715-456-7232
Carla Pelzl	jcpelzl@gmail.com	715-835-6628
Nina Logan	ninalogan@centurylink.net	715-878-4585
Ellen Terwilliger	terwilset@gmail.com	715-839-0731
Lori Kempen	lorikempen@charter.net	715-832-8088

Note:

The ECAMGAV Board minutes may be accessed at <https://eauclairemastergardeners.weebly.com/ecam-board.html>.

ECAMGVs TAKE NOTE:

CAUTION!

From the Extension Office...

Mike Maddox, head of the Master Gardener Volunteer Program, forwarded a message from Ruth Schriefer, Interim Program Director- Family Living Programs for UW-Extension. The part that concerns us follows:

It has come to our attention that we have Master Gardeners who are being asked for information on food safety and food preservation. Those topics are outside the scope of their volunteer training and roles so they should not be responding to these questions. They can certainly encourage their audiences to use the resources from UW-Extension, or to call the UW-Extension office.

There is a huge safety/liability issue with this.

Remember to take those garden photos throughout the summer for entry of your best shot in the ECAMGA Annual Photo Contest. Rules and details will be available in the August ECAMGA newsletter. For more info contact Carol Cox at c7w6c2200@charter.net.



ECAMGVA

2018 Calendar

All meetings at Extension Office unless otherwise noted

July 16: A. J. Leiden, Aquatic Invasive Species Coordinator from Beaver Creek Reserve will be presenting a program on aquatic invasives

July 10: Tour of 3 gardens in 3rd Ward.

July 22: Tour of Dick & Jennifer Lienhardt's gardens.

August: MG meeting - TBA

September 17: MG meeting - TBA

September 21-22: State WIMGA conference in Eau Claire

September 30: MGV Hours due in to the UW-Extension Office

October 7: Annual Photo Contest entries due

October 15: MG meeting - TBA

November 19: Election board members & Just Local Foods presentation

December 17: Annual Holiday Party



Events



THE CIRCLE OF LIFE

*The Foundation of our Ecosystem
is Rooted in Native Plants.
Bee Sustainable. Plant Natives.*

Bus Trip to Prairie Moon Nursery Aug. 2, 2018

The Eau Claire Garden Club is sponsoring a trip to Prairie Moon Nursery near Winona, MN.

Join us for a two hour guided tour of Prairie Moon, stunning views of Buena Vista Park in Alma, and fun shopping in the charming town of Stockholm.

Lunch will be on your own at Nelson Cheese Factory.
Feel free to bring snacks and beverages along since it'll be a late lunch.

Cost: \$32 (includes coach bus with WiFi, driver's tip & miscellaneous)
Where: Leave Target Parking Lot at 8:00 a.m. sharp. Return about 5:45 p.m.

Registration: Make checks payable to Eau Claire Garden Club - Send to: Sharon Daniels, 10606 24th Ave., Eau Claire, WI 54703 (Include your phone # please in case we need to contact you). Or register online at eauclairegardenclub.com (click on "Events")

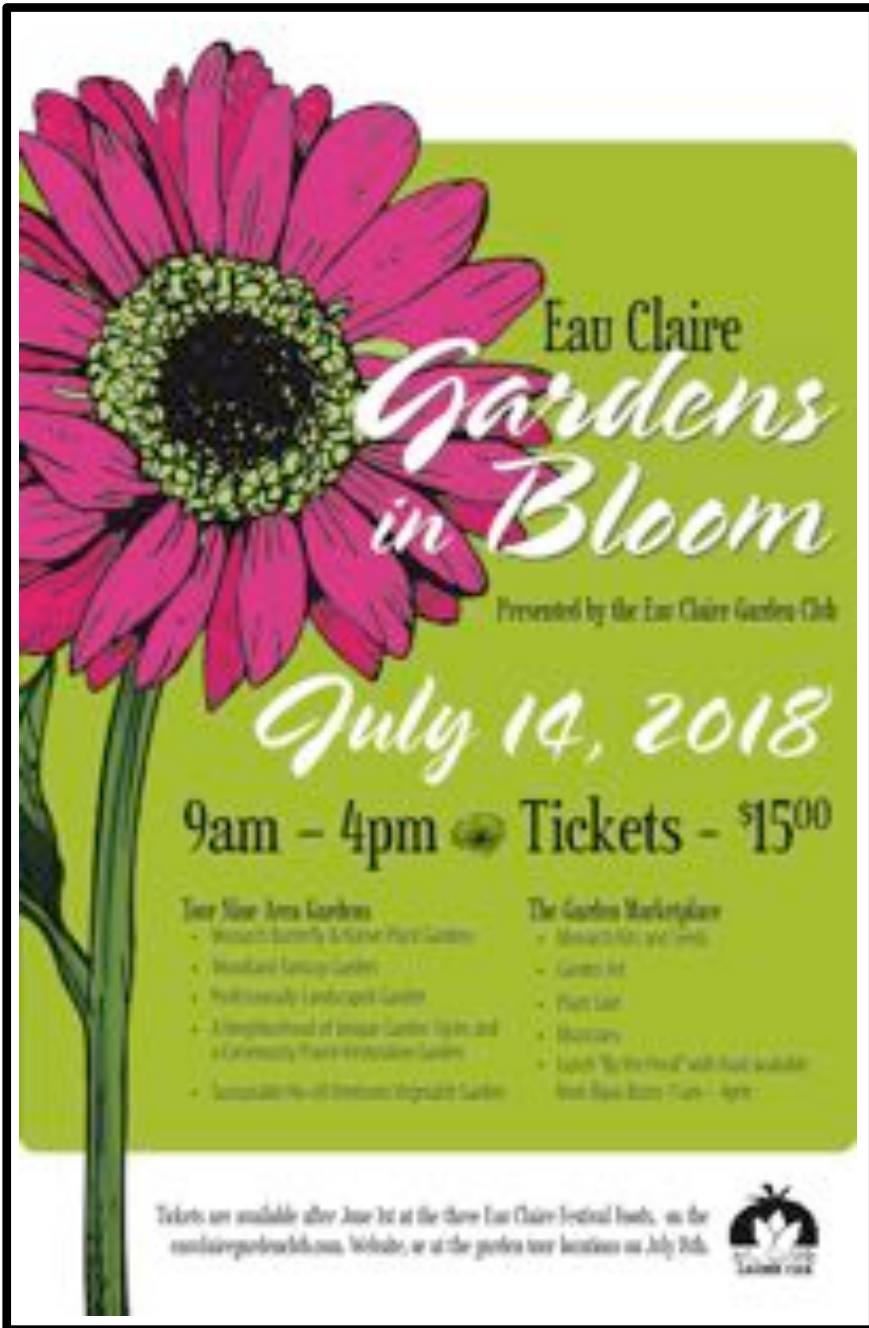
Any questions? Contact Sharon at 715 830 1403 or davesgraced1@charter.net

Deadline for reservations is July 23, 2018. No refunds after this date.



THE CIRCLE OF LIFE

*The Foundation of our Ecosystem
is Rooted in Native Plants.
Bee Sustainable. Plant Natives.*



Many of the ECAMG's are involved with the "Eau Claire Gardens in Bloom" being held on July 14, 2018 and three of our Eau Claire Area Master Gardener's (ECAMG) gardens are on this tour. They are:

1. **Mikel Reise** –Parkside Circle W and **Ellen Wynkoop** – Parkside Circle W

will be answering the question, "How do you attract birds and butterflies to a city garden?" The answer - provide them with the native plants they love. Get ideas on how you can create your own pollinator habitat. Seminars on the amazing life cycle of Monarch Butterflies will be presented throughout the day. Come home with your own butterfly incubator.



2. **Gary & Mary Mathis** –County Road W Eleva will give you a look at what an old fashioned homestead might look like? This country setting offers large vegetable gardens that fill Gary and Mary's cupboards for winter feasting. Learn how they do it with



companion plantings that keep their gardens prolific all season. Their earth home features solar panels and attests to their hard work to call themselves modern "wannabe homesteaders."

3. **Nancy Spak** – County Road F, Eau Claire. Stroll down a long driveway in rural Eau Claire and you'll come upon 10 large woodland fantasy gardens sprinkled with surprises. Look for fairies, dragons, unicorns, butterflies, sea creatures, elves, wolves, waterfalls, mannequins, stained glass art, and fountains whimsically designed to complement flowers, shrubs and trees. Top the day off with "Lunch by the Pond" by Bijou Bistro. Purchase hearth-oven baked pizza, salads and a beverage to enjoy while sitting under the pergola by a five-acre pond.



A tour of 3 gardens in the Third Ward area of Eau Claire is planned for Tuesday, July 10th with a rain date of Wednesday, July 11th. **Watch for an email with details** and directions in early July.

The much anticipated tour of Dick and Jennifer Lienhardt's vegetable garden will be the week of July 22nd. **An email with directions will be sent prior to that as well.**

The November 19th Education presentation will feature a panel from Just Local Foods in Eau Claire. They will be discussing and answering questions involving the relationship between the "eat local" trend and Master Gardeners.

See you there!!! Bring some friends along!



Aquatic Invasive Species by Nina Logan

On July 16, A. J. Leiden, Aquatic Invasive Species Coordinator from Beaver Creek Reserve will be presenting a program on aquatic invasive species, both plant and animal. A.J. will review the different types of invasives, some of which we probably don't even know are actually invasive.

The boating and fishing season is upon us and we all need to help prevent the spread of these invasives who hitch a ride on our boats and equipment as we move from one water body to another without cleansing our boats. Wisconsin law prohibits launching an unclean boat or trailer which may be infested with invasive material.

Join us on Monday evening, July 16 at 6:30 p.m. at the Eau Claire County Extension office (227 First St. West) in Altoona to learn more. Bring a friend and enjoy the evening. Coffee and snacks are provided and door prizes are offered. Sponsored by Eau Claire Area Master Gardeners Association.



Meet Me in the Garden

July 17th, 2018

6:00 p.m. - 7:30 p.m.

Spoooner Ag Research Station
(N5264 Orchard Lane, Spooner, WI)

This event is in the Teaching and Display Gardens and this year's theme is "Get Social in the Garden".

Meet in the Teaching & Display Garden. Please bring your own chair for the program in the garden. In case of inclement weather, the program will relocate to the Station Building at W6646 Highway 70, Spooner. or Check our website for details closer to the event. www.northcountrymqv.org. Cost: Free.

The research station is located 1 ½ miles east of Spooner on Highway 70 half-mile west of Highway 70/63 interchange. For more information contact:
Sue Reinardy Phone: 715-462-3361 or
Email: sreinardy@centurytel.net.



S1 County Road K, Fall Creek, WI 54742
Phone: 715-877-2212

Classes/Events:

Breeding Bird Atlas Blitz

July 10 and July 20

7:00 a.m. to 11:00 a.m.

(Register separately for each session)

Bird nesting season is almost here! Come join us for a Breeding Bird Atlas Blitz as we spend the day searching the Reserve to record as many breeding birds as possible.

The Breeding Bird Atlas is a five-year citizen science project that aims to map the distribution and abundance of all bird species breeding in WI. Along with contributing to a massive statewide citizen science project, you will have the exciting opportunity to learn how to recognize bird courtship, nesting behavior, and to watch the birds as they prepare for the arrival of their young. You will gain knowledge about bird behavior that will be sure to make each of your nature walks from that day forward even more fun and interesting!

Cost: \$0. Registration required by July 8 for the July 10th session and by July 17th for the July 20th session.

BCR Butterfly Count – July 10

9:30 a.m. until 12:00 p.m.

Join other butterfly enthusiasts for the annual BCR Butterfly count. Meet at the Wise Nature Center to review species likely to be seen; then get directions for the count and receive a route assignment. Most counters usually spend two to four hours counting, but you may count for as little as one hour or for most of the day if you wish.

Results are forwarded to the North American Butterfly Association. (Suitable for children 8 years and older, and adults).

Please register by July 8, so we can have enough materials on hand for counters.

No Fee - There is a suggested \$3 donation (not required) to cover BCR's cost, assessed by NABA, payable on the day of the count.



**Plant Identification: Annuals
Perennials and Vines**
6 week online course starts July 9th, 2018

Longwood Gardens, one of the premiere public gardens in the world, is partnering with **NC State University Department of Horticultural Science** to provide a fully-online introduction to plants. This survey course will introduce you to plants that can be grown throughout the nation.

Through photo-stories, video presentations, online plant profiles, an e-book, flash-cards, vocabulary games, mystery plants and hundreds of beautiful images you will learn the key identifying characteristics of these plants and how best to use them in the landscape. This is an asynchronous, fully online, self-paced, non-credit course. You may participate anywhere that you have access to the internet. You will have access to the course resources 24/7 for the entire 6 weeks of the class and for 6 months after the course ends. There are no required presentations or any set times that you will need to meet online. In addition to the course fee you may choose to purchase an optional hard copy of the online e-book that is included with the course.

Cost: MGVs \$98, general public \$195 (to qualify for the discounted rate you must have request Susan Mahr send a email to Lucy Bradley to verifying your eligibility.)

Contact:

Lucy Bradley - Phone: 919-513-2001 or Email:

Lucy_Bradley@ncsu.edu.

Register Now

For better flavor withhold water from tomatoes, cucumbers and squash for three days before harvesting.



It is strawberry season! Did you know, that, according to the Old Farmer's Almanac: Strawberries take their name from the custom of mulching them with straw to preserve them from rot.



Photo by Judy Mitchell

The Youth Garden Program is underway at North Riverfront Park in Eau Claire. Master Gardeners are welcome to stop in to learn about the program. From July 9 to July 26, hours are Monday through Thursday, 9 to 10:30 am.

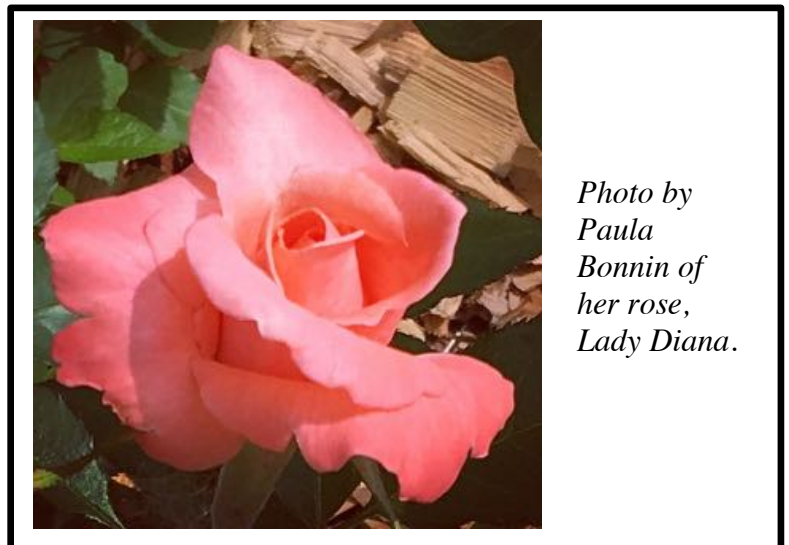


Photo by Paula Bonnin of her rose, Lady Diana.



Bits and Pieces

Ten Reasons

to Attend the 2018 Autumn at the River WIMGA Conference
– September 21-22, 2018 in Eau Claire, Wisconsin!

1. **Terrific Keynote Speakers:** Mark Dwyer from Rotary Botanical Gardens on Woody Plants for Fantastic Foliage. Ben Futa covering Principles of Planting Design with Perennials. These guys know their stuff!
2. **Engaging Breakout Session Speakers on Topics from B to V:** Bulbs, Daylilies, GMOs, Gardens will Save the World, Herbs, History of Plant Diseases, Home Berry Production, Kids and Gardening, Mycology and Mushroom Hunting, Plant Diseases & Management, Photographing your Garden, and Sustainable Vegetable Gardening.
3. **Three Fascinating Tours:** Behind the scenes looks at your choice of:
 - a. Silver Spring Foods – horseradish production facility, Sunbow Farm - Community Supported Agriculture, and Down to Earth Garden Center by bus.
 - b. River Bend Vineyard & Winery, and Mary Dirty Face Farm - Fruit Orchard by bus.
 - c. Walking Tour of Mayo Clinic Gardens and downtown Phoenix Park
4. **Renowned Farmers Market:** Saturday starts with a short presentation about Eau Claire's unique Farmers Market. Then, experience the market, just a short, scenic walk away, for yourself. Bring your market bag!
5. **Dynamic Downtown Eau Claire Venue:** The 2018 WIMGA conference will be held at the lovely Lismore Hotel in downtown Eau Claire at the confluence of the Chippewa & Eau Claire Rivers. Thru August 31st you can reserve a room for two for \$119 plus tax (1-715-835-8888 Ext. 5002). The hotel features The Informalist restaurant and bar and is located in the heart of the downtown shopping and entertainment district.
6. **Value:** The early bird full registration price of \$105 (until July 9th) covers keynote speakers, breakout sessions, and three meals. Optional Friday tours cost \$15 or \$45 and include lunch.
7. **Birds of a Feather:** Gather together and network with fellow Master Gardener Volunteers and other gardeners from across the state and region. Meet new friends and reconnect with old acquaintances.
8. **WIMGA Annual Meeting.** Learn what the Wisconsin Master Gardener Association does for you and what you can do for it.
9. **Silent Auction, Vendor Fair, and Raffles:** Shop for useful and beautiful products and learn about garden related businesses. Garden art, honey, maple syrup, bulbs, compost, are just a few of the products offered by vendors. Our sponsoring area garden centers will also be represented. Check out themed silent auction packages and fun raffle items.
10. **The Chippewa Valley:** Is a happening place bustling with something-for-everyone, things to see and do before and after the conference program. Bike trails, kayaking, canoeing, shopping, restaurants, breweries, wineries, orchards, and a vibrant art and music scene are all available options for fun add-ons to your weekend. And, the brand new, riverside Pablo Center for the Arts near the Lismore has its grand opening that weekend. Check out: visiteauclaire.com



Japanese Spikenard - *Aralia cordata* 'Sun King'

This gold form of Japanese Spikenard is a subshrub (dies back in winter but grows like a shrub) that really brightens up a shady corner. It emerges in spring with large, bright gold leaves and providing it gets a few hours of sun daily, the foliage will remain bright gold throughout the summer. In full shade, foliage will be chartreuse to lime green in colour. Tall 2' spikes of tiny white flowers appear in summer followed by inedible, purple berries. The plant itself will reach 29-35 inches tall. This plant makes a good textural contrast in the shade garden. In addition, it is deer resistant. A man by the name of Barry Yinger found this plant in a Japanese department store nursery and brought it to the US. It is said to be one of the most amazing new perennial introductions in the last decade. The plant is Zone 3-9 and will grow in most soils requiring average to moist conditions. It is a very easy-care plant that provides appeal in the garden.



REMEMBER... September 21-22 is the Wisconsin Master Gardener Conference in Eau Claire.

SIGN UP FOR... the early bird price of \$105 which is good until July 9th. Also take the opportunity to sign up to volunteer. Sign up online at: <https://www.wimgaconferences.com>.

EAU CLAIRE AREA MASTER GARDENER NEWSLETTER

A newsletter for the Eau Claire Area Master Gardener Association members.

Unless otherwise noted, articles for this newsletter are submitted and/or written by ECAMGA members or the newsletter editor, Carol W. Cox. Unless otherwise noted, graphics are from clipart. Newsletter layout by Carol W. Cox

For more Eau Claire County UW Cooperative Extension information go to our website:

www.uwex.edu/ces/cty/eaclaire

Phone: 715-839-4712

Fax: 715-839-6277

M-F 8AM-5PM



The University of Wisconsin Extension provides affirmative action and equal opportunity in education, programming and employment for all qualified persons regardless of race, color, gender/sex, creed, disability, religion, national origin, ancestry, age, sexual orientation, pregnancy, marital or parental, arrest or conviction record or veteran status." If you need an interpreter, materials in alternate formats or other accommodations to access this program, activity or service, please contact Erin LaFaive at 715-839-4712 as soon as possible preceding the scheduled event so that proper arrangements can be made in a timely fashion

**Eau Claire County
Extension Office
227 First Street West
Altoona, WI 54720**